

能源及重工行业加工解决方案

Manufacturing Solutions for Energy & Heavy Industry



+ 华东大区
Eastern China Region

上海市青浦区华新镇华隆路1777号D栋610室
Add: Room 610 Building D No. 1777 Hualong Road
Huaxin Town Qingpu District Shanghai
Tel: +86-592-7301561

+ 华南大区
Southern China Region

广东省东莞市长安镇锦厦聚和机械模具五金城D1区49A号
Add: No. 49A D1 District Jinxia Juhe Machinery Mould
Hardware Commercial District Chang'an Town
Dongguan City Guangdong Province
Tel: +86-592-7310203

+ 西部大区
West Region

四川省成都市成华区建材路隆鑫九熙三期一栋2119
Add: Room 2119 Building 1 Longxin Jiuxi Phase III
Jiancai Road Chenghua District Chengdu City
Sichuan Province
Tel: +86-592-7306375

+ 华北大区
Northern China Region

天津市西青区碧祥路新津国际新兴园6-2-701
Add: 6-2-701 Xinjin International Xinxing Park Bixiang Road Xiqing
District Tianjin
Tel: +86-592-7301126

+ 东北大区
Northeast Region

辽宁省沈阳市铁西区建设东路158号（华润铁西中心）2109号
Add: No. 2109 (China Resources Tiexi Center) No. 158 Jianshe East
Road Tiexi District Shenyang City Liaoning Province
Tel: +86-592-7306375

+ 华中大区
Central China Region

湖北省武汉市经济技术开发区创业路12号嘉昱商务中心B座1304-1307号
Add: No. 1304-1307 Block B Jiayu Business Center No. 12 Chuangye
Road Wuhan Economic and Technological Development Zone Hubei
Province
Tel: +86-592-7310203

厦门金鹭特种合金有限公司
XIAMEN GOLDEN EGRET SPECIAL ALLOY CO.,LTD.

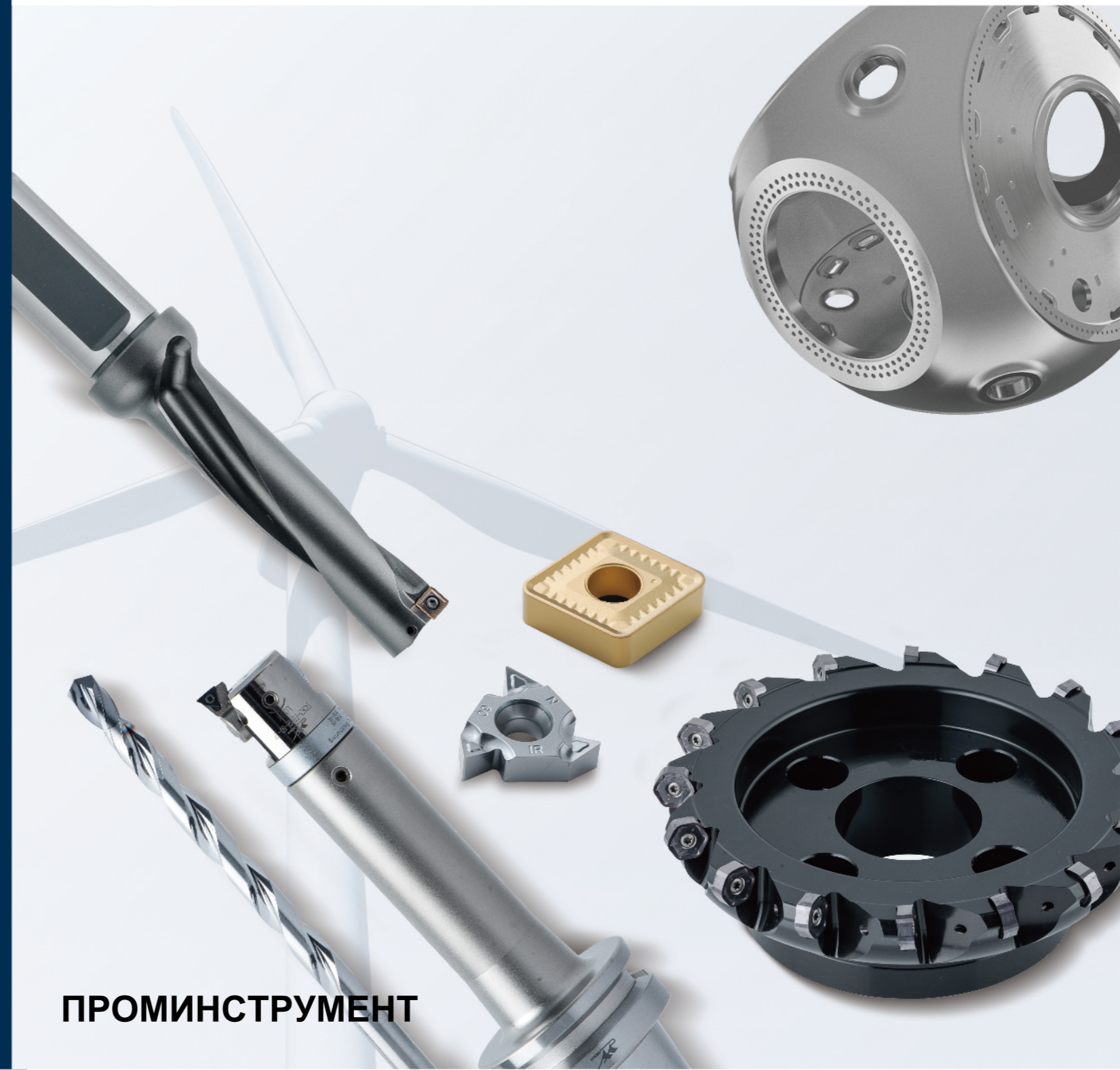
地址: 中国厦门市湖里区兴隆路69号
Add: No.69 Xinglong Road Huli District Xiamen CHINA
工厂地址: 中国厦门同安工业集中区集成路1601-1629号
Factory Add: No.1601-1629 Jicheng Road Industrial
Concentration Area Tongan Xiamen CHINA
Tel: +86-592-7107392 Fax: +86-592-7107322
PC: 361006 Email: gesac@cxtc.com

www.gesac.com.cn

400-998-6858



BST202103k



ПРОМИНСТРУМЕНТ

厦门金鹭特种合金有限公司, 成立于 1989 年, 是一家中外合资的国家高新技术企业, 隶属于中国六大稀土集团之一的厦门钨业股份有限公司。公司致力于高品质钨粉末材料、硬质合金、精密切削工具等钨系列产品的研发、生产, 以及行业专业解决方案的提供, 是世界知名的钨粉末、硬质合金及切削工具供应商。

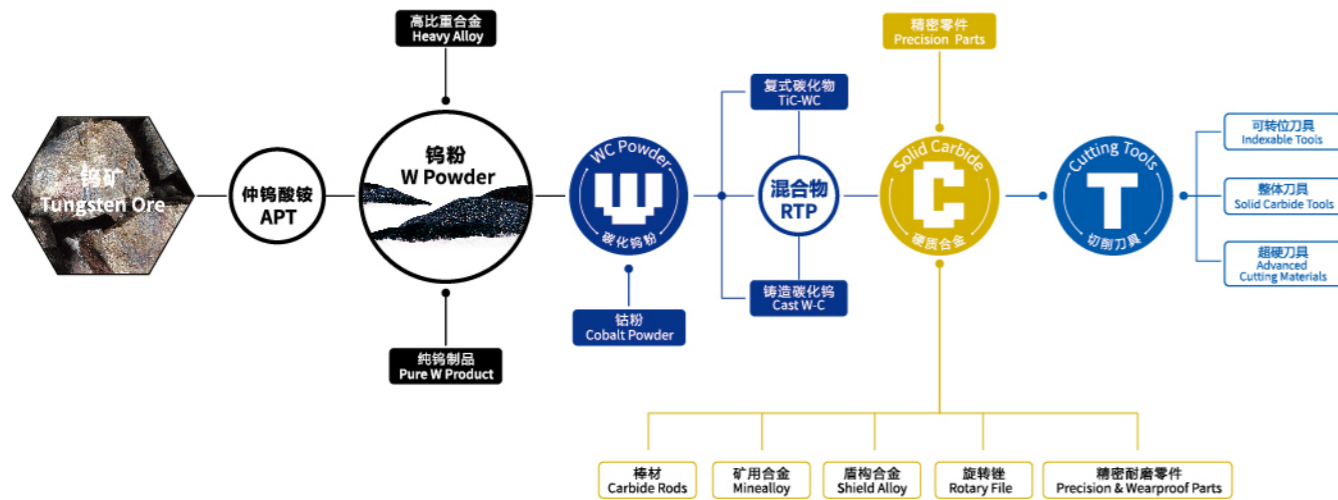
凭借完整钨产业链的产品集成技术研发, 以及务实、创新的管理理念, 厦门金鹭始终保持着强劲的发展势头, 为全球用户提供最高性价比的产品和服务, 为现代工业领域解决高硬度、耐高温、耐磨损问题, 提供了优良的产品和完善的解决方案, 客户遍布全球四十多个工业发达国家和地区, 享誉海内外。

公司拥有国内 4 个生产基地和 1 个国家级企业研发中心, 海外 3 个销售公司和 1 个海外生产基地, 独立承担并完成多项“国家科技支撑计划项目”, “国家科技重大专项”, “国家火炬计划项目”, “国家重点新产品”开发项目及省市重点研究课题, 被评为“战略性新兴产业骨干企业”、“创新型企业”、“先进科技企业”。

Xiamen Golden Egret Special Alloy Co., Ltd. (GESAC), founded in 1989, is a Sino-foreign joint venture with national high-tech, affiliated with XTC, which is one of six major rare earth groups in China. GESAC is committed to research & development, production and professional solutions providing of high-quality tungsten powder materials, cemented carbide, precision cutting tools and other tungsten products. Up to now, GESAC has become world-famous manufacturer and supplier of tungsten powder, cemented carbide and precision cutting tools products.

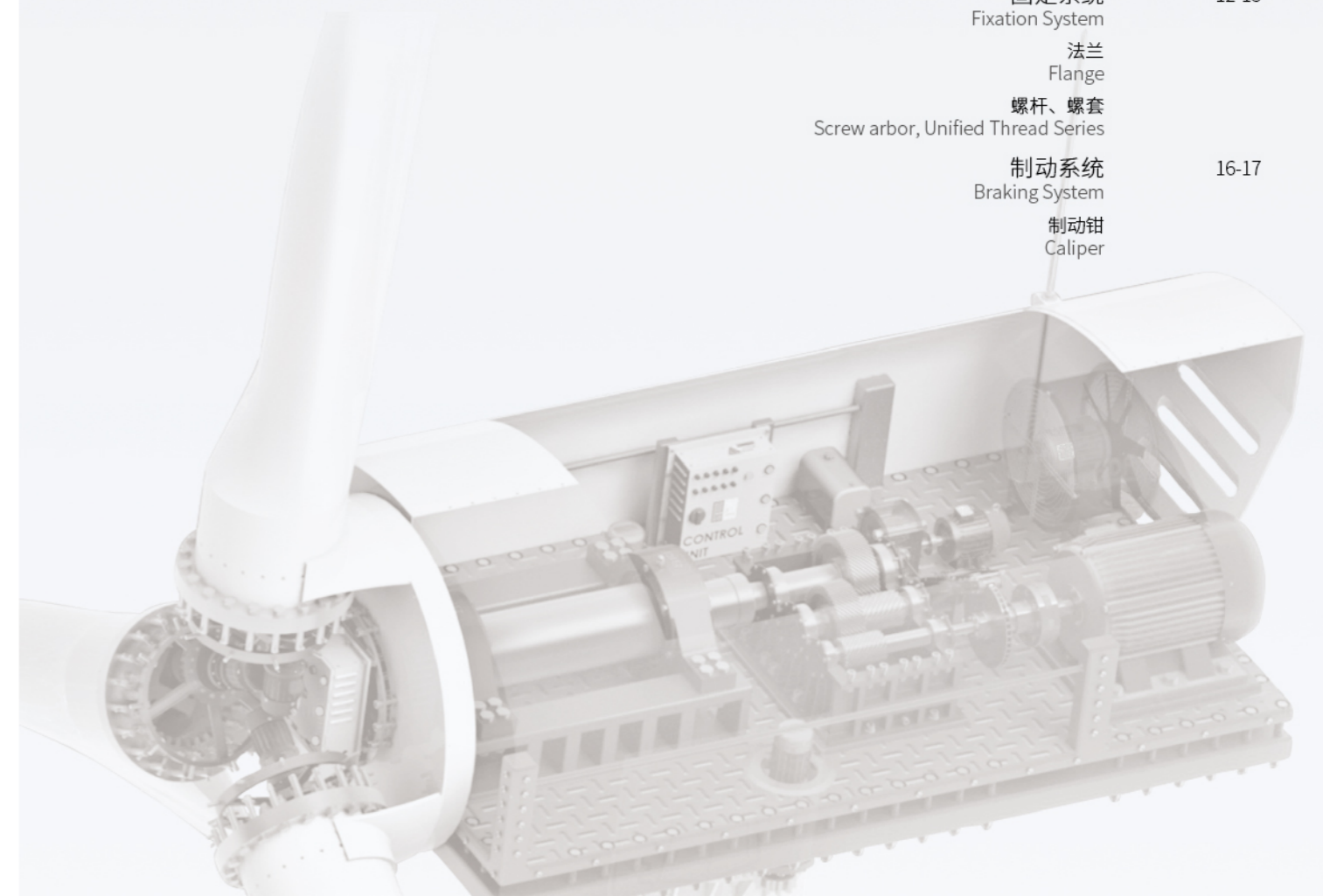
With the Integrated Product Development of complete tungsten industry chain, as well as a pragmatic and innovative management concept, GESAC has always maintained a strong momentum of development, providing the cost effective tungsten powder products and services for global users, offering the excellent products and perfect solutions for solving high hardness, high temperature resistance and wear resistance topics. Our brand "Golden Egret" has become one of the leading brand in the market, enjoying famous reputation in more than 40 countries and regions.

GESAC owns four production headquarters and one national level research center domestically, and three sales branches and one production base overseas. We undertook and completed several development programs independently, including the “National Science and Technology Support Programs”, the “National Torch Program Projects”, and the “National Key Projects” and so on. GESAC was awarded as “Key Enterprise for Strategic Emerging Industry”, “Innovative Enterprise” and “Enterprise with Advanced Technology”.



风电行业加工解决方案
Manufacturing Solutions for Wind Power

变桨系统 Yaw system	02-05
轮毂 Hub	
叶片 Vane	
传动系统 Transmission System	06-09
主轴 Principal Axis	
轴承 Bearing	
变速系统 Power Train System	10-11
扭力臂 Torque Link	
固定系统 Fixation System	12-15
法兰 Flange	
螺杆、螺套 Screw arbor, Unified Thread Series	
制动系统 Braking System	16-17
制动钳 Caliper	





**连接面粗铣加工
Rough Milling of
Connecting Surface**

- HNGU+MFC115/145/160
高经济多功能面铣
Multi-Function Face Milling with High Cost Effective
双面12刃面铣刀, 经济性高; 设计有多个主偏角, 满足不同工况需求
Double sided 12 edge milling cutter, high economy. The design has multiple main deflection angles to meet the requirements of different working conditions



**连接面精铣加工
Finishing Milling of
Connecting Surface**

- ANKX+MEC190
负型曲线刃方肩铣
Square Shoulder Milling With Negative Curve Edge

**连接面侧壁粗铣加工
Rough Milling of Connecting
Surface Side Walls**

- ANKX+MHC190
高效率玉米铣
High Efficiency Helical Milling



**连接面钻孔加工
Drill of Connecting Surface**

- QPMG+GHDS
高效率浅孔钻
High Efficiency Indexable Hole Drilling



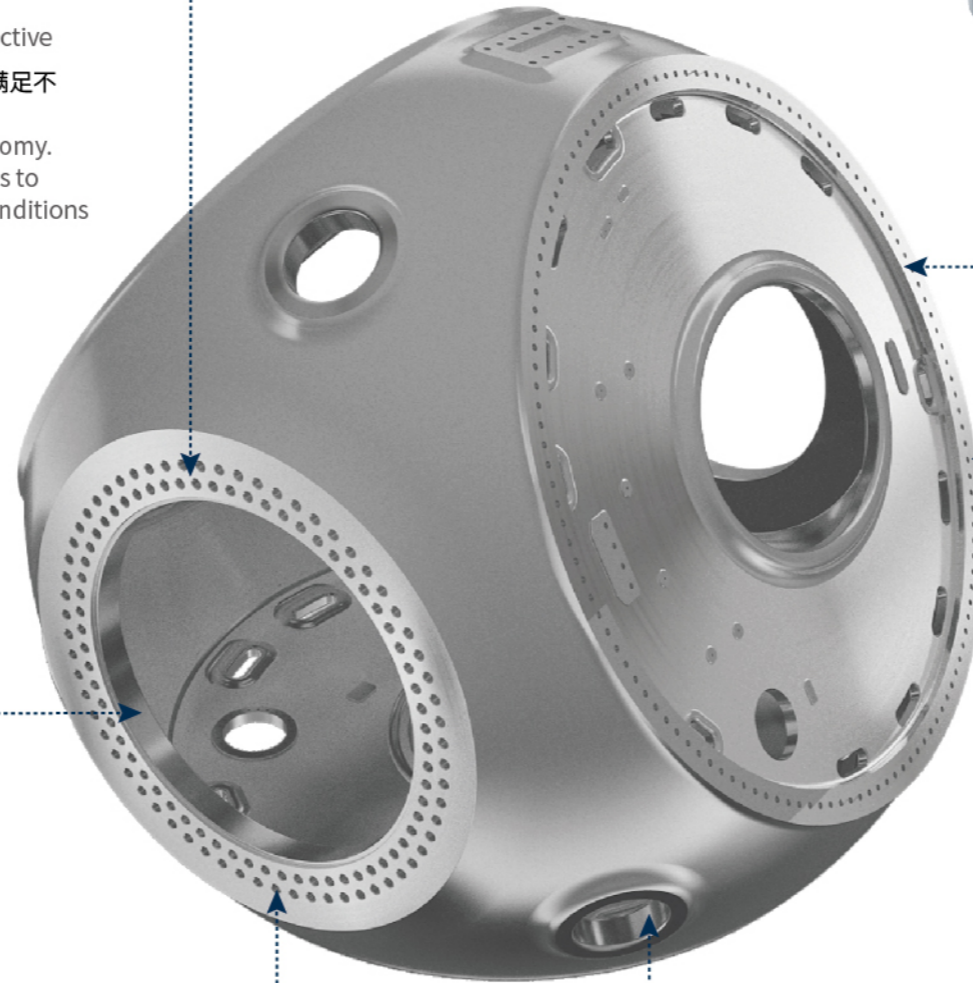
**连接面反铣加工
Back Milling of
Connecting Surface**

- CNEU+MSA110-113
三面刃铣刀
Three Side Milling



**电机孔螺旋插补铣加工
Machining Screw Insert
and Milling Motor**

- RC+MPC100
高精度仿形铣
High Precision Profile Milling



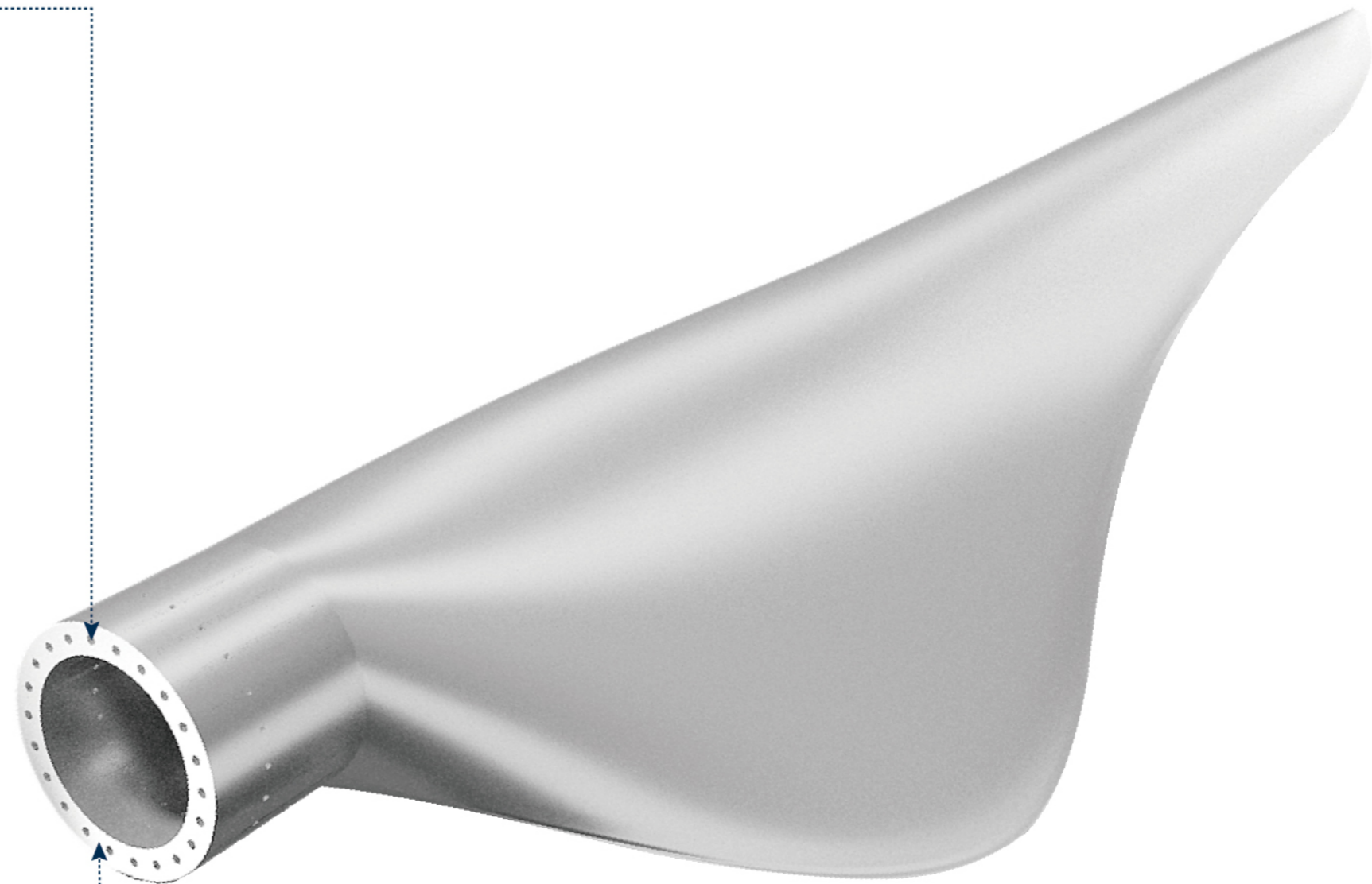
连接面钻孔加工
Drill of Connecting Surface

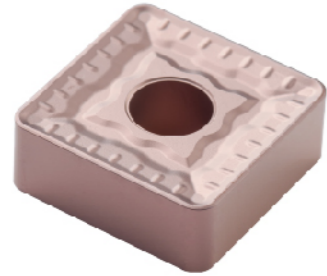
- QPMG+GHDS
高效率浅孔钻
High Efficiency Indexable Hole Drilling



连接面铣削加工
Milling of Connecting Surface

- SNE(M)U+MFB145/245/275/288
双面通用面铣
General Double Side Face Milling Tool





外圆粗车加工
Rough Turning
the External Surface

- SNMM+QH
负型单面重载车削
Negative Single Side Heavy-duty Turning

变速箱连接孔深孔加工
Deep Hole Drilling of
Gearbox Connecting Hole

- TPMT+GD600
BTA深孔钻
Deep Hole Drill



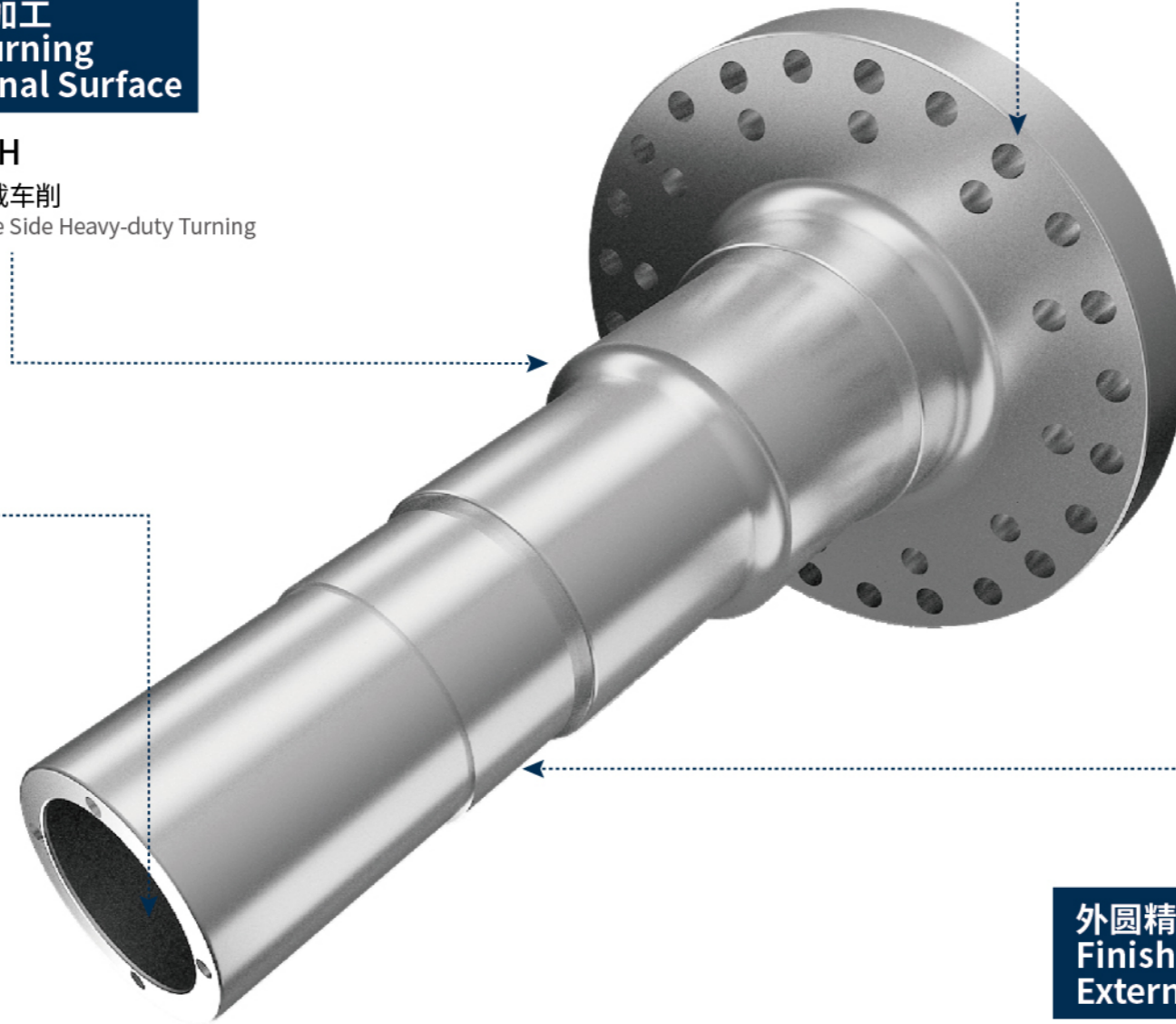
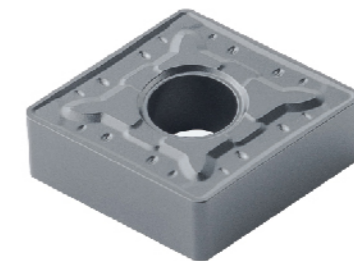
法兰盘连接孔加工
Drilling of Flange
Connection Hole

- QPMG+GHDS
高效率浅孔钻
High Efficiency Indexable Hole Drilling



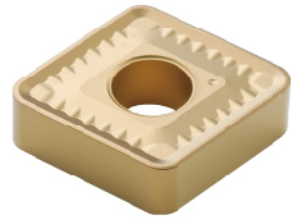
外圆精车加工
Finishing the
External Surface

- CNMG+QM
双面负型车削
Double Side Negative Turning



**外圆粗车加工
Rough Turning the
External Surface**

- CNMM+BH
负型单面重载车削
Negative Single Rough Turning



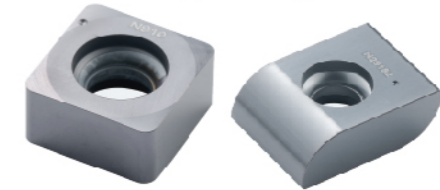
**外圆精车加工
Finishing the
External Surface**

- TNMG+QF
高精度车削刀片
High-precision Turning Inserts



**内齿圈齿轮铣削加工
Milling of Internal Ring Gear**

- LNE
高精度非标齿轮铣刀
High-precision Gear Milling Insert
根据客户需求非标定制, 具有高精度、高耐磨性的特点,
适合于高效齿轮铣削加工
According to the customer's demand, non-standard
customized, with high precision, high wear resistance,
suitable for efficient gear milling



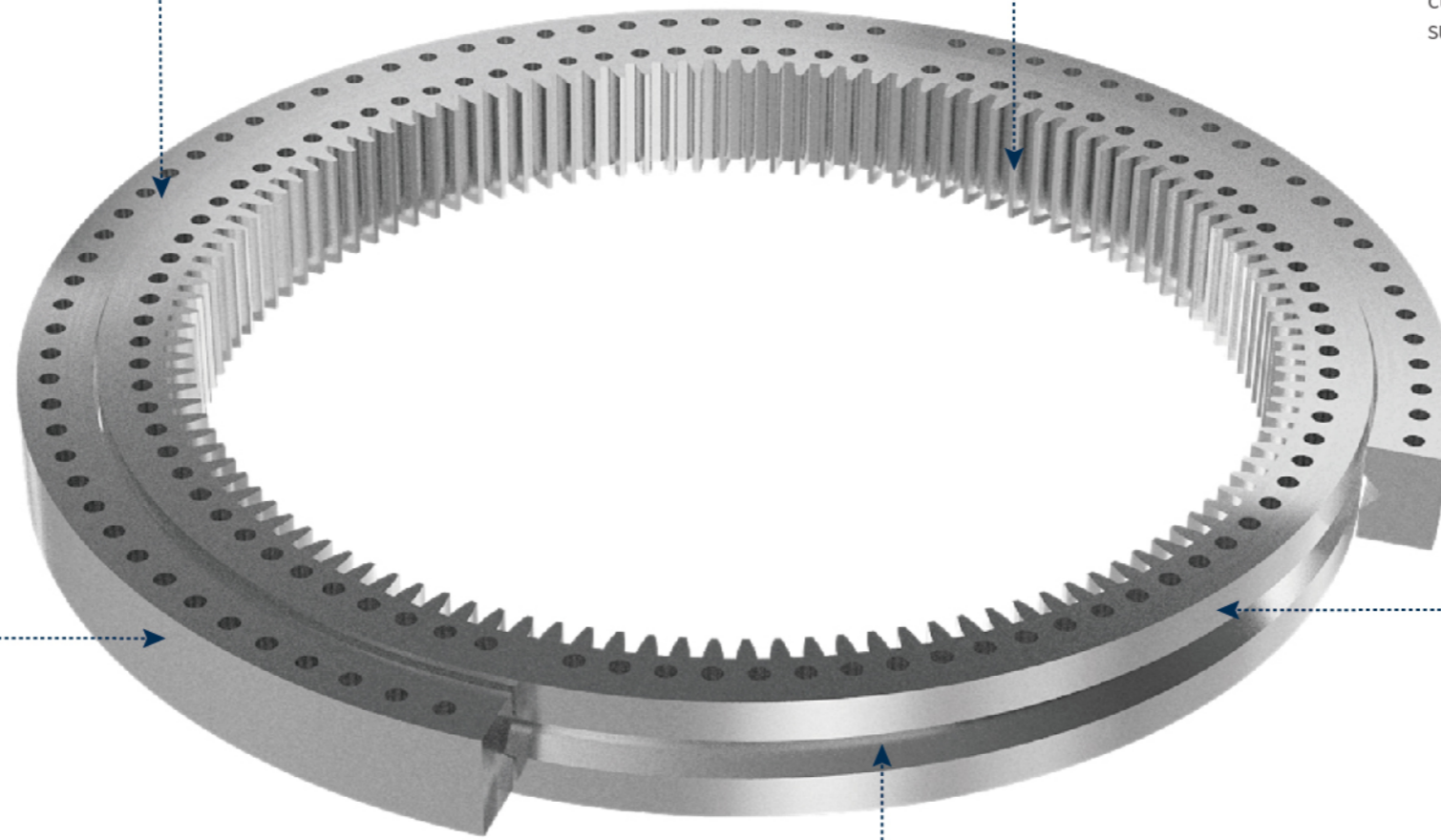
**球沟道粗加工
Rough Machining
of Ball Channel**

- RCMX
粗车刀片
Rough Turning Insert



**球沟道硬车精加工
Turning Finish of
Ball Channel**

- RCGN
高耐磨性CBN刀具
High Wear Resistance CBN Tool





安装孔镗削加工
Boring of Mounting Hole

- RB/FB
高精度镗削系统
Precision Boring Series

主轴过孔螺旋插补铣加工
Interpolation Milling of Spindle Through Hole Spiral

- RC+MPC100
高精度仿形铣
High Precision Profile Milling



定位面粗铣加工
Rough Milling of Positioning Surface

- HNGU+MFC115/145/160
高经济多功能面铣
Multi-Function Face Milling with High Cost Effective



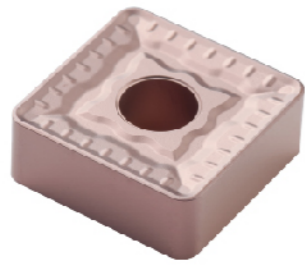
安装孔钻孔加工
Drilling of Installation Hole

- QPMG+GHDS
高效率浅孔钻
High Efficiency Indexable Hole Drilling



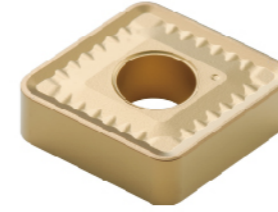
外圆粗车加工
Rough Turning the
External Surface

- **SNMM+QH**
负型单面重载车削
Negative Single Side Heavy-duty Turning



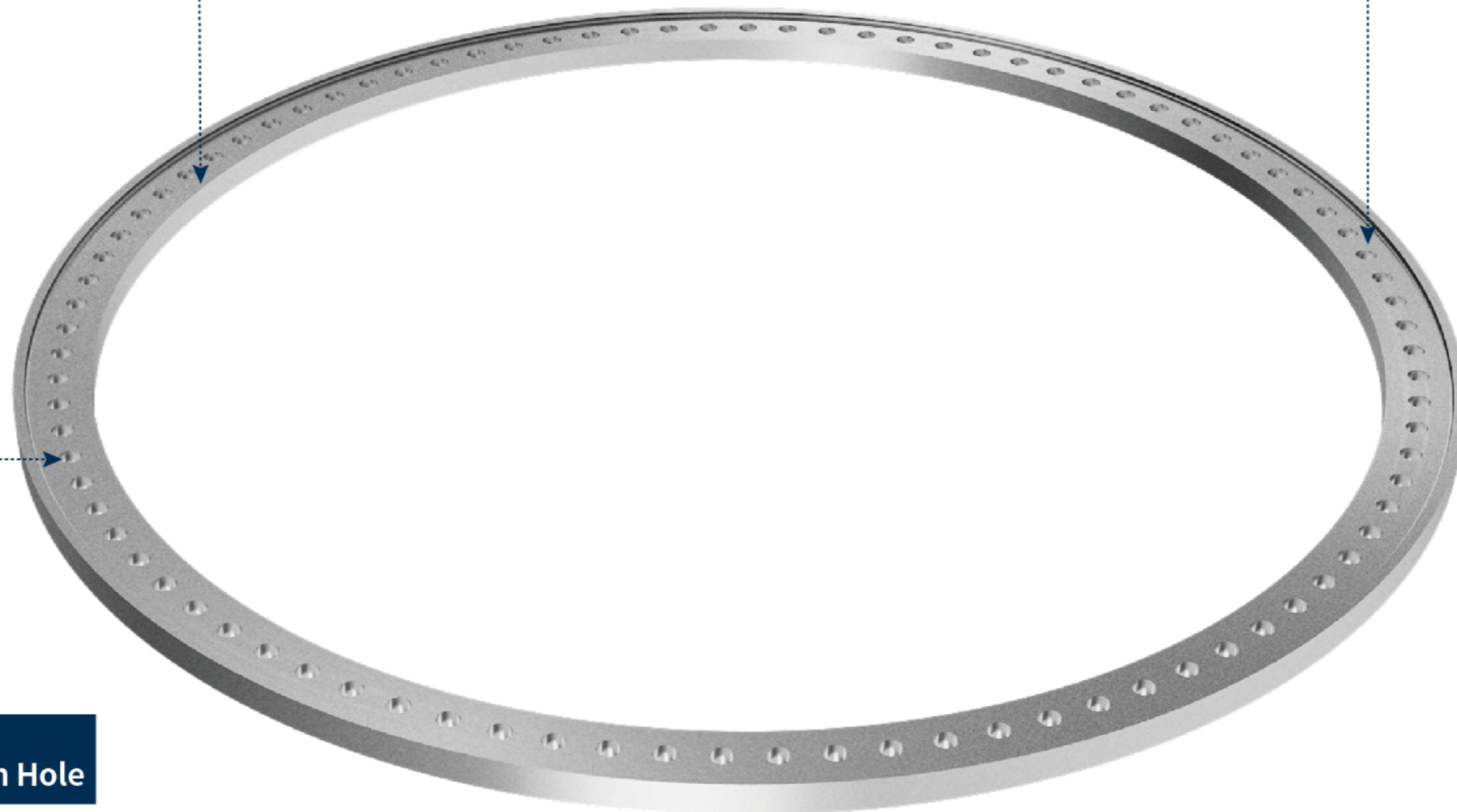
外圆半精车削加工
Semi Finish Turning of Outer Circle

- **CNMM+BH**
负型单面粗车削
Negative Single Rough Turning



安装孔钻孔加工
Drilling of Installation Hole

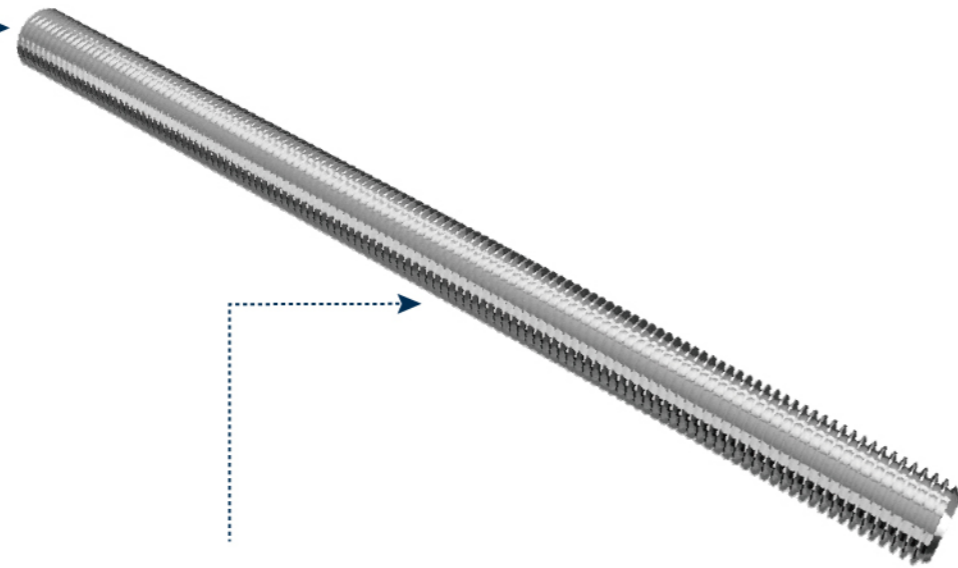
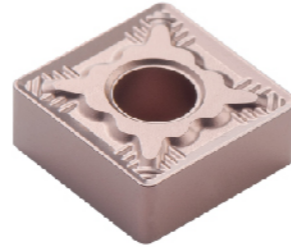
- **QPMG+GHDS**
高效率浅孔钻
High Efficiency Indexable Hole Drilling



**端面车削加工
Face Turning**

• **CNMG+LR**

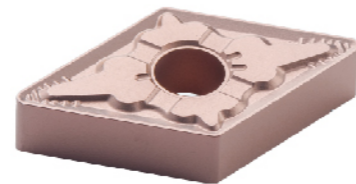
负型LR系列+GPT6100系列
Negative insert LR Series +GPT6100 Grade Series
GE.FORCE全新钢材高效车削刀具
Brand-new High-efficiency Turning Tool for Steel



**外圆粗/精车加工
Finish/ Rough-Finish
Turning of External Surface**

• **DNMG+QR**

负型QR系列+ GPT6100系列
Positive Insert QR Series +GPT6100 Grade Series
GE.FORCE全新钢材高效车削刀具
Brand-new High-efficiency Turning Tool for Steel



**内圆车削加工
Internal Turning**

• **CCMT+MM**

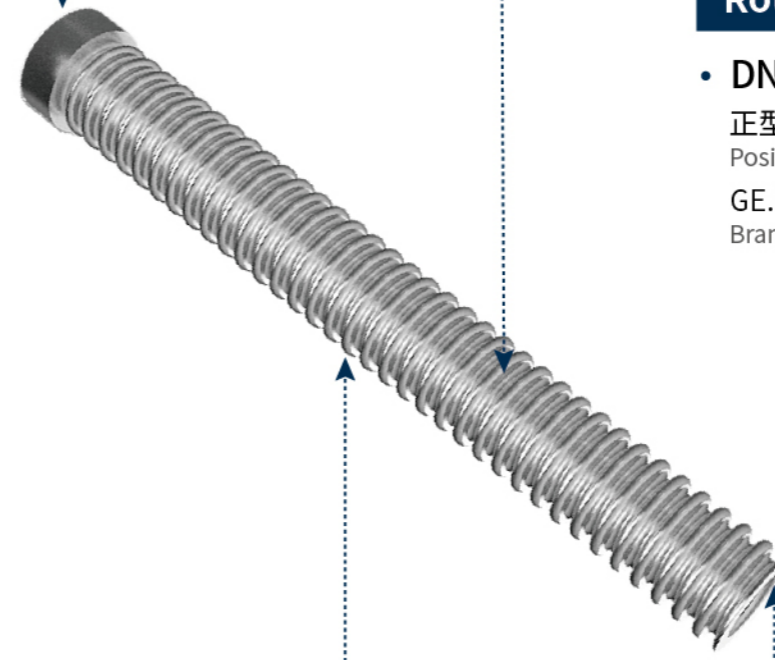
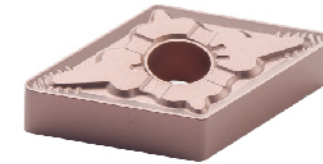
正型MM系列+ GPT6100系列
Positive Insert MM Series +GPT6100 Grade Series
GE.FORCE全新钢材高效车削刀具
Brand-new High-efficiency Turning Tool for Steel



**外圆仿型粗车加工
Rough Turning of Cylindrical Profile**

• **DNMG+QR**

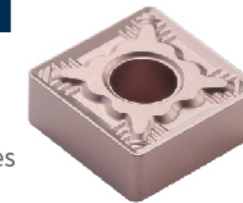
正型QR系列+ GPT6100系列
Positive Insert QR Series +GPT6100 Grade Series
GE.FORCE全新钢材高效车削刀具
Brand-new High-efficiency Turning Tool for Steel



**外圆粗车加工
Cylindrical Rough Turning**

• **CNMG+LR**

负型LR系列+ GPT6100系列
Negative insert LR Series +GPT6100 Grade Series
GE.FORCE全新钢材高效车削刀具
Brand-new High-efficiency Turning Tool for Steel



**内孔螺纹加工
Internal Hole
Thread Processing**

• **22IRN60-TC**

螺纹车削ISO 60°
Thread turning ISO 60°





端面粗铣加工
Rough Face Milling

- SDMT+MKB113
单面4刃快进给铣刀
Single Side 4-edge Fast Feed Milling Cutter

端面精铣加工
Finish Face Milling

- SNE(M)U+MFB145/245/275/288
双面通用面铣
General Double Side Face Milling Tool



端面安装孔钻孔加工
Drilling of End Face Mounting Hole

- QPMG+GHDS
高效率浅孔钻
High Efficiency Indexable Hole Drilling



侧壁钻孔加工
Sidewall Drilling

- D918S
高性能钢用麻花钻
High Efficiency Drilling



侧壁凹面铣削加工
Side Wall Concave Milling

- PP300-SPEED
高效加工摆线铣刀
High Efficiency Cycloold Milling Tool
实现大切深、小切宽的高效稳定加工, 兼具高抗崩性和高耐磨性
It can achieve high efficiency and stable processing of large cutting depth and small cutting width, and has high collapse resistance and high wear resistance



侧壁粗铣加工
Rough Milling of Side Wall

- LNMU+MKC190
双面4刃快进给铣刀
Double Side 4-edge Fast Feed Milling Cutter



侧壁深孔钻孔加工
Side Wall Deep Hole Drilling

- D938
高稳定性深孔钻
High Stability Deep Hole Drill



安装孔镗削加工
Boring of Mounting Hole

- RB/FB
高精度镗削系统
Precision Boring Series

